

**■ Tubular cable lugs, copper 0.75 - 630 mm<sup>2</sup>**

Series L

**Features**

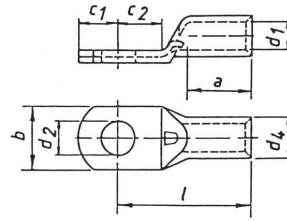
- All cable lugs are annealed to optimise crimping properties
- Flat contact surface and chamfered barrel for easy cable insertion

**Material**

- Copper

**Surface**

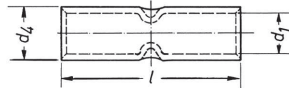
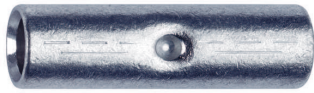
- tin plated



mm <sup>2</sup>	Size of bolt ø	Part No.	Dimensions mm									100 pcs.	
			d1	a	b	d2	d4	c1	c2	l	~ kg	pcs.	
0.75	M3	L0753MS	1.3	6.0	6.0	3.2	2.8	3.25	4.0	12.0	0.06	100	
0.75	M4	L0754MS	1.3	6.0	6.5	4.3	2.8	4.0	5.0	13.0	0.06	100	
0.75	M5	L0755MS	1.3	6.0	7.5	5.3	2.8	4.75	5.5	14.0	0.06	100	
1.5	M3	L153MS	1.8	6.0	6.5	3.2	3.3	3.25	4.0	12.0	0.08	100	
1.5	M4	L154MS	1.8	6.0	6.5	4.3	3.3	4.0	5.0	13.0	0.08	100	
1.5	M5	L155MS	1.8	6.0	7.5	5.3	3.3	4.75	5.5	14.0	0.08	100	
1.5	M6	L156MS	1.8	6.0	9.0	6.4	3.3	6.5	6.5	16.0	0.09	100	
2.5	M3	L2.53MS	2.3	6.0	7.5	3.2	4.2	3.25	4.0	12.0	0.12	100	
2.5	M4	L2.54MS	2.3	6.0	7.5	4.3	4.2	4.0	5.0	13.5	0.12	100	
2.5	M5	L2.55MS	2.3	6.0	8.5	5.3	4.2	4.75	5.5	14.0	0.13	100	
2.5	M6	L2.56MS	2.3	6.0	9.5	6.5	4.2	6.5	7.0	16.0	0.15	100	
2.5	M8	L2.58MS	2.3	6.0	13.0	8.5	4.2	7.75	9.5	20.0	0.18	100	
4	M4	L44MS	3.0	8.0	8.5	4.3	5.0	4.75	5.5	17.0	0.21	100	
4	M5	L45MS	3.0	8.0	9.0	5.3	5.0	4.75	6.0	17.0	0.21	100	
4	M6	L46MS	3.0	8.0	10.0	6.5	5.0	6.5	7.0	19.0	0.22	100	
4	M8	L48MS	3.0	8.0	13.0	8.5	5.0	8.5	9.5	22.0	0.28	100	
6	M4	L64MS	4.0	9.0	9.5	4.3	6.0	5.0	5.5	18.0	0.29	100	
6	M5	L65MS	4.0	9.0	9.5	5.3	6.0	6.5	6.5	19.0	0.32	100	
6	M6	L66MS	4.0	9.0	10.0	6.5	6.0	7.0	6.5	19.0	0.32	100	
6	M8	L68MS	4.0	9.0	14.0	8.5	6.0	8.5	8.5	22.0	0.36	100	
10	M4	L104MS	4.4	10.0	10.0	4.3	6.0	5.0	5.5	20.0	0.27	100	
10	M5	L105MS	4.4	10.0	10.0	5.3	6.0	6.25	6.5	21.0	0.29	100	
10	M6	L106MS	4.4	10.0	10.0	6.5	6.0	7.0	7.0	21.0	0.26	100	
10	M8	L108MS	4.4	10.0	13.0	8.5	6.0	8.5	8.5	24.0	0.33	100	
16	M5	L165MS	5.5	11.0	11.5	5.3	8.0	5.5	6.5	24.0	0.65	100	
16	M6	L166MS	5.5	11.0	11.5	6.5	8.0	6.25	7.5	24.0	0.65	100	
16	M8	L168MS	5.5	11.0	14.0	8.5	8.0	8.5	9.5	27.0	0.74	100	
16	M10	L1610MS	5.5	11.0	17.0	10.5	8.0	10.5	11.5	29.0	0.79	100	
16	M12	L1612MS	5.5	11.0	19.0	13.0	8.0	12.0	13.0	31.0	0.80	100	
25	M5	L255MS	6.8	12.0	13.0	5.5	9.0	7.5	7.5	26.0	0.80	100	
25	M6	L256MS	6.8	12.0	13.0	6.5	9.0	7.5	7.5	26.0	0.75	100	
25	M8	L258MS	6.8	12.0	14.0	8.5	9.0	10.0	10.0	28.0	0.83	100	
25	M10	L2510MS	6.8	12.0	17.0	10.5	9.0	12.0	12.0	31.0	0.90	100	
25	M12	L2512MS	6.8	12.0	19.0	13.0	9.0	13.0	13.0	32.0	0.90	100	
35	M6	L356MS	8.2	15.0	16.0	6.5	11.0	7.5	7.5	30.0	1.40	100	
35	M8	L358MS	8.2	15.0	16.0	8.5	11.0	10.0	10.0	32.0	1.45	100	
35	M10	L3510MS	8.2	15.0	18.0	10.5	11.0	12.0	12.0	35.0	1.53	100	
35	M12	L3512MS	8.2	15.0	19.0	13.0	11.0	13.0	13.0	36.0	1.57	100	
35	M14	L3514MS	8.2	15.0	21.0	15.0	11.0	14.5	14.5	38.0	1.60	100	
35	M16	L3516MS	8.2	15.0	26.0	17.0	11.0	14.5	14.5	38.0	1.73	100	
50	M6	L506MS	9.5	18.0	18.0	6.5	12.0	7.5	7.5	36.0	1.58	100	
50	M8	L508MS	9.5	18.0	18.0	8.5	12.0	10.0	10.0	36.0	1.63	100	
50	M10	L5010MS	9.5	18.0	18.0	10.5	12.0	12.0	12.0	38.0	1.73	100	
50	M12	L5012MS	9.5	18.0	21.0	13.0	12.0	13.0	13.0	39.0	1.74	100	
50	M14	L5014MS	9.5	18.0	21.0	15.0	12.0	14.5	14.5	42.0	1.80	100	
50	M16	L5016MS	9.5	18.0	26.0	17.0	12.0	16.0	16.0	43.0	1.80	100	

mm <sup>2</sup>	Size of bolt ø	Part No.	Dimensions mm									100 pcs.	
			d1	a	b	d2	d4	c1	c2	l	~ kg	pcs.	
70	M6	L706MS	11.2	20.0	21.0	6.5	14.5	10.0	10.0	39.0	2.85	100	
70	M8	L708MS	11.2	20.0	21.0	8.5	14.5	10.0	10.0	39.0	2.74	100	
70	M10	L7010MS	11.2	20.0	21.0	10.5	14.5	12.0	12.0	41.0	2.90	100	
70	M12	L7012MS	11.2	20.0	22.0	13.0	14.5	13.0	13.0	42.0	2.90	100	
70	M14	L7014MS	11.2	20.0	23.0	15.0	14.5	14.5	14.5	45.0	3.00	100	
70	M16	L7016MS	11.2	20.0	26.0	17.0	14.5	16.0	16.0	46.0	3.10	100	
95	M6	L956MS	13.4	22.0	25.0	6.5	17.0	10.0	10.0	45.0	4.13	50	
95	M8	L958MS	13.4	22.0	25.0	8.5	17.0	10.0	10.0	45.0	4.00	50	
95	M10	L9510MS	13.4	22.0	25.0	10.5	17.0	12.0	12.0	45.0	4.10	50	
95	M12	L9512MS	13.4	22.0	25.0	13.0	17.0	13.0	13.0	47.0	4.20	50	
95	M14	L9514MS	13.4	22.0	27.0	15.0	17.0	14.5	14.5	49.0	4.30	50	
95	M16	L9516MS	13.4	22.0	27.0	17.0	17.0	16.0	16.0	51.0	4.40	50	
95	M20	L9520MS	13.4	22.0	30.0	21.0	17.0	16.0	16.0	57.0	4.97	50	
120	M8	L1208MS	15.0	26.0	28.0	8.4	19.5	14.0	14.0	51.0	6.80	50	
120	M10	L12010MS	15.0	26.0	28.0	10.5	19.5	14.0	14.0	51.0	6.65	50	
120	M12	L12012MS	15.0	26.0	28.0	13.0	19.5	14.0	14.0	51.0	6.44	50	
120	M14	L12014MS	15.0	26.0	28.0	15.0	19.5	15.0	15.0	52.0	6.55	50	
120	M16	L12016MS	15.0	26.0	30.0	17.0	19.5	16.0	16.0	54.0	6.58	50	
120	M20	L12020MS	15.0	26.0	36.0	21.0	19.5	22.0	22.0	63.0	7.9	50	
150	M8	L1508MS	16.5	30.0	31.0	8.4	21.0	14.0	14.0	56.0	8.05	50	
150	M10	L15010MS	16.5	30.0	31.0	10.5	21.0	14.0	14.0	56.0	7.90	50	
150	M12	L15012MS	16.5	30.0	31.0	13.0	21.0	15.0	15.0	57.0	7.85	50	
150	M14	L15014MS	16.5	30.0	31.0	15.0	21.0	15.0	15.0	57.0	7.75	50	
150	M16	L15016MS	16.5	30.0	31.0	17.0	21.0	16.0	16.0	58.0	7.70	50	
150	M20	L15020MS	16.5	30.0	36.0	21.0	21.0	22.0	22.0	66.0	9.00	50	
185	M10	L18510MS	19.0	30.0	35.0	10.5	24.0	18.0	18.0	65.0	12.00	50	
185	M12	L18512MS	19.0	30.0	35.0	13.0	24.0	18.0	18.0	65.0	12.00	50	
185	M14	L18514MS	19.0	30.0	35.0	15.0	24.0	18.0	18.0	65.0	11.60	50	
185	M16	L18516MS	19.0	30.0	35.0	17.0	24.0	18.0	18.0	65.0	11.40	50	
185	M20	L18520MS	19.0	30.0	39.0	21.0	24.0	22.0	22.0	69.0	12.00	50	
240	M10	L24010MS	21.0	35.0	39.0	10.5	26	21.5	19.0	72.0	15.00	50	
240	M12	L24012MS	21.0	35.0	39.0	13.0	26	21.5	19.0	72.0	14.80	50	
240	M14	L24014MS	21.0	35.0	39.0	15.0	26	21.5	19.0	72.0	14.60	50	
240	M16	L24016MS	21.0	35.0	39.0	17.0	26	21.5	19.0	72.0	14.40	50	
240	M20	L24020MS	21.0	35.0	39.0	21.0	26	22.0	19.0	72.0	14.00	50	
300	M12	L30012MS	23.5	44.0	43.0	13.0	29.5	24.0	24.0	87.0	23.90	25	
300	M14	L30014MS	23.5	44.0	43.0	15.0	29.5	24.0	24.0	87.0	23.50	25	
300	M16	L30016MS	23.5	44.0	43.0	17.0	29.5	24.0	24.0	87.0	23.10	25	
300	M20	L30020MS	23.5	44.0	43.0	21.0	29.5	24.0	24.0	87.0	22.80	25	
400	M12	L40012MS	27.0	44.0	49.0	13.0	34.0	24.0	24.0	90.0	33.50	20	
400	M14	L40014MS	27.0	44.0	49.0	15.0	34.0	24.0	24.0	90.0	33.00	20	
400	M16	L40016MS	27.0	44.0	49.0	17.0	34.0	24.0	24.0	90.0	32.50	20	
400	M20	L40020MS	27.0	44.0	49.0	21.0	34.0	24.0	24.0	90.0	31.50	20	
500	M16	L50016MS	31.0	68.0	56.0	17.0	38.0	24.0	24.0	120.0	47.00	10	
500	M20	L50020MS	31.0	68.0	56.0	21.0	38.0	24.0	24.0	120.0	46.00	10	
630	M16	L63016MS	34.0	68.0	59.0	17.0	40.0	24.0	24.0	120.0	44.00	10	
630	M20	L63020MS	34.0	68.0	59.0	21.0	40.0	24.0	24.0	120.0	43.50	10	

Copper tubular cable lugs and connectors



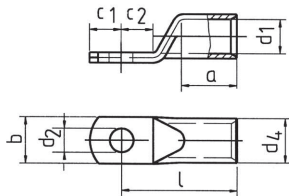
■ **Butt-connector, copper 0.75 - 400 mm<sup>2</sup>**  
Series L

- Material**  
■ Copper
- Surface**  
■ tin plated



mm <sup>2</sup>	Part No.	Dimensions mm			100 pcs.	
		d1	d4	l	~ kg	pcs.
0.75	LV0.75	1.3	2.8	20	0.09	100
1.5	LV15	1.8	3.3	25	0.13	100
2.5	LV2.5	2.3	4.2	25	0.22	100
4	LV4	3	5	25	0.28	100
6	LV6	4	6	20	0.28	100
10	LV10	4.4	6	21	0.25	100
16	LV16	5.5	8	26	0.62	100
25	LV25	6.8	9	29	0.71	100
35	LV35	8.2	11	32	1.21	100
50	LV50	9.5	12	38	1.42	100

mm <sup>2</sup>	Part No.	Dimensions mm			100 pcs.	
		d1	d4	l	~ kg	pcs.
70	LV70	11.2	14.5	42	2.50	100
95	LV95	13.4	17	48	3.68	50
120	LV120	15	19.5	52	5.65	50
150	LV150	16.5	21	56	6.60	50
185	LV185	19	24	65	9.80	25
240	LV240	21	26	75	12.40	25
300	LV300	23.5	29.5	75	16.70	25
400	LV400	27	34	75	22.40	20
500	LV500	31	38	140	47.50	10
630	LV630	34	40	160	50.00	5



■ **Tubular cable lug for switch gear connections, copper 35 - 300 mm<sup>2</sup>**  
Standard type with narrow palm

**Features**

- All cable lugs are annealed to optimise crimping properties
- Flat contact surface and chamfered barrel for easy cable insertion

- Material**  
■ Copper
- Surface**  
■ tin plated

mm <sup>2</sup>	Size of bolt Ø	Part No.	Dimensions mm									100 pcs.	
			d1	a	b	d2	d4	c1	c2	l	~ kg	pcs.	
35	M6	5SG6	8.5	17	15.0	6.5	12.0	7.5	7.5	32	1.78	25	
		6SG6	10.0	19	15.0	6.5	14.0	10.0	10.0	37	2.95	25	
		6SG8	10.0	19	17.0	8.5	14.0	10.0	10.0	37	2.82	25	
		6SG10	10.0	19	19.0	10.5	14.0	11.5	12.0	39	3.08	25	
50	M6	7SG6	12.0	21	17.0	6.5	16.5	10.0	10.0	43	4.22	25	
		7SG8	12.0	21	17.0	8.5	16.5	10.0	10.0	43	4.10	25	
		7SG10	12.0	21	19.0	10.5	16.5	11.5	12.0	44	4.45	25	
		7SG12	12.0	21	19.0	13.0	16.5	13.0	13.0	46	4.22	25	
70	M6	8SG6	13.5	25	19.0	6.5	18.0	11.5	12.0	48	5.49	25	
		8SG8	13.5	25	19.0	8.5	18.0	11.5	12.0	48	5.46	25	
		8SG10	13.5	25	19.0	10.5	18.0	11.5	12.0	48	5.13	25	
		8SG12	13.5	25	19.0	13.0	18.0	13.0	13.0	49	5.15	25	
95	M6	9SG6	15.0	26	19.0	6.5	19.5	11.5	14.0	51	6.16	10	
		9SG8	15.0	26	19.0	8.5	19.5	11.5	14.0	51	5.94	10	
		9SG10	15.0	26	19.0	10.5	19.5	11.5	14.0	51	5.81	10	
		9SG12	15.0	26	19.0	13.0	19.5	14.0	14.0	51	5.92	10	
120	M6	10SG6	15.0	26	19.0	6.5	19.5	11.5	14.0	51	6.16	10	
		10SG8	15.0	26	19.0	8.5	19.5	11.5	14.0	51	5.94	10	
		10SG10	15.0	26	19.0	10.5	19.5	11.5	14.0	51	5.81	10	
		10SG12	15.0	26	19.0	13.0	19.5	14.0	14.0	51	5.92	10	

mm <sup>2</sup>	Size of bolt Ø	Part No.	Dimensions mm									100 pcs.	
			d1	a	b	d2	d4	c1	c2	l	~ kg	pcs.	
150	M6	10SG6	16.5	30	19.0	6.5	21.0	11.5	14.0	56	6.85	10	
		10SG8	16.5	30	19.0	8.5	21.0	11.5	14.0	56	6.80	10	
		10SG10	16.5	30	19.0	10.5	21.0	11.5	14.0	56	6.75	10	
		10SG12	16.5	30	19.0	13.0	21.0	15.0	15.0	57	7.15	10	
185	M10	11SG10	19.0	30	24.5	10.5	24.0	11.5	18.0	65	10.59	10	
		11SG12	19.0	30	31.0	13.0	24.0	18.0	18.0	65	11.09	10	
		11SG16	19.0	30	31.0	17.0	24.0	18.0	18.0	65	9.76	10	
240	M10	12SG10	21.0	35	31.0	10.5	26.0	11.5	19.0	72	12.70	5	
		12SG12	21.0	35	31.0	13.0	26.0	21.5	19.0	72	13.72	5	
		12SG16	21.0	35	31.0	17.0	26.0	21.5	19.0	72	13.28	5	
300	M10	13SG10	23.5	44	31.0	10.5	30.0	11.5	24.0	87	19.70	5	
		13SG12	23.5	44	31.0	13.0	30.0	24.0	24.0	87	22.72	5	
		13SG16	23.5	44	31.0	17.0	30.0	24.0	24.0	87	22.50	5	