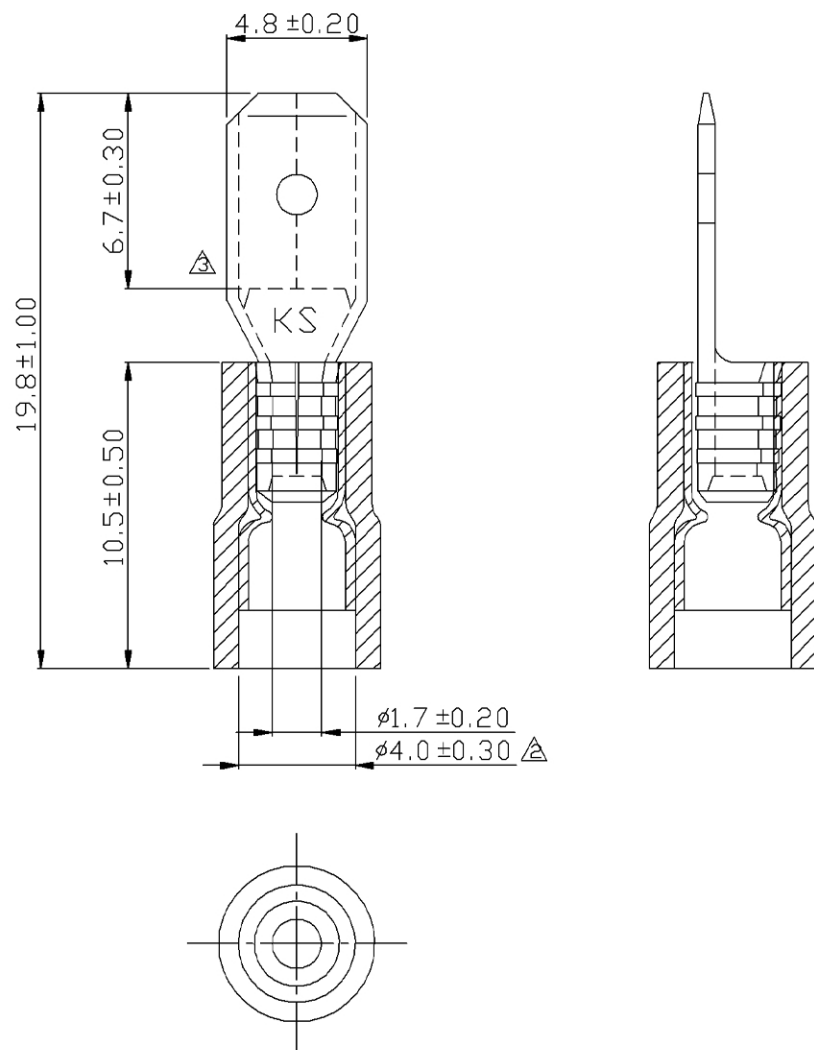


REV	DESCRIPTION	DATE
△	RDK-96131	張馨尹 2008/01/09
△	RDK-98053	洗勝賢 2009/03/17
△	RDC-101015	謝婉如 2012/09/05



NOTE :

1. MAXIMUM ELECTRIC CURRENT :

A.W.G.	22	20	18	16
AMP.	3	4	7	10
2. MAXIMUM ELECTRICAL RATING : 105°C 600 VOLTS MAX.
3. INSULATION MATERIAL : VINYL
4. INSULATION COLOR : RED
5. TERMINAL MATERIAL : BRASS
6. WIRE RANGE : 22-16 A.W.G. (0.5-1.5 mm²)
7. NEMA TAB : 0.032 inch * 0.187 inch (0.8 mm * 4.75 mm)
8. DOUBLE CRIMP : WITH COPPER SLEEVE ON BARREL
9. TERMINAL SURFACE TREATMENT : TIN PLATED
10. TERMINAL THICKNESS : 0.40 mm

Tolerance Unless Otherwise Specified	
0 > 6 mm ± 0.20	ANGLE
6 > 18 mm ± 0.30	0° ° REF ±
18 > 30 mm ± 0.40	° ° ±
30 > 75 mm ± 0.50	° ° ±

NAME	VINYL-INSULATED DOUBLE CRIMP MALE DISCONNECTORS			UNIT	mm	
PART NO.	VM1-187-8	MATERIAL	-----	APPROVE		
NUMBER	KA-951329-C	SCALE	SHEET	PAGE	CHECKED	
DATE	2006/09/11	4/1	1-3	10F2	DRAWN	張馨尹