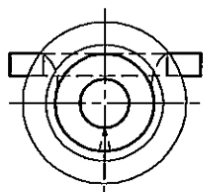
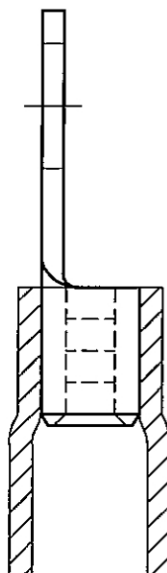
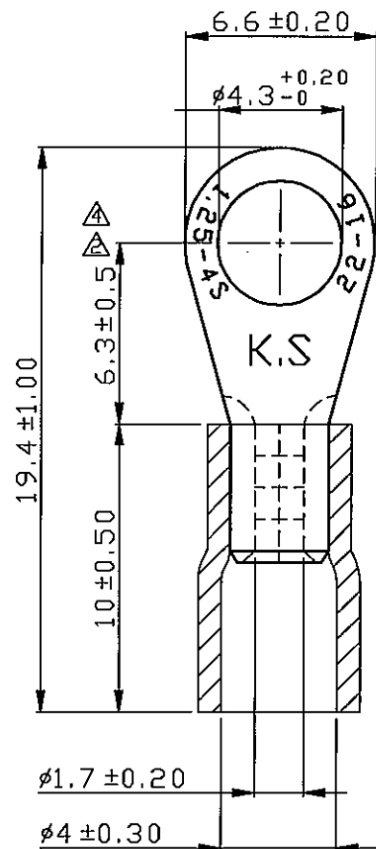


A B C D E F G H X

REV	DESCRIPTION	DATE
△	RDK-97048	2009/04/13
△	RDK-97127	2009/04/13
△	RDK-98020	2009/04/13
△	RDJ-106018	2017/02/02



NOTE :

1. MAXIMUM ELECTRIC CURRENT :

A.W.G.	22	20	18	16
AMP.	9	12	17	18
2. MAXIMUM ELECTRICAL RATING : 105°C 600 VOLTS MAX.
3. INSULATION MATERIAL : VINYL
4. INSULATION COLOR : RED
5. TERMINAL MATERIAL : COPPER
6. WIRE RANGE : 22-16 A.W.G. (0.5-1.5 mm²)
7. TERMINAL SURFACE TREATMENT : TIN PLATED
8. TERMINAL THICKNESS : 0.75 mm

△ Tolerance Unless Otherwise Specified	
0 >	mm ± ANGLE
>	mm ± 0° ° REF ±
>	mm ± ° ° ±
>	mm ± ° ° ±

NAME	VINYL-INSULATED RING TERMINALS			UNIT	mm	
PART NO.	VRS1-4	MATERIAL	-----	APPROVE		
NUMBER	KA-951075-C	SCALE	SHEET	PAGE	CHECKED	
DATE	2006/08/31	4/1	1-4	10F1	DRAWN	

A B C D E F G H X